

IRISnotes™ for Mac



Quick User Guide

Digital pen and receiver unit

For a detailed description of the digital pen and the receiver unit, please refer to the IRISnotes Quick User Guide provided with your IRISnotes package.

Using NoteTaker in Mac System

● **Installing the NoteTaker for Mac software**

The following procedure guides you through installation of the NoteTaker for Mac.

1. Insert the **Mobile Note Taker Application Software** CD-ROM in your CD-ROM drive and follow the on-screen instructions. When the installation is complete, remove the CD-ROM from the CD-ROM drive.
2. Click on the NoteTaker installer icon (NoteTaker.pkg). The **NoteTaker Installer** opens (a standard Mac installer):

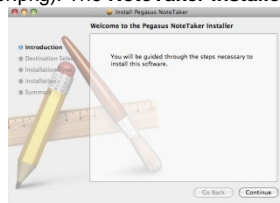


Figure 1: NoteTaker Installer

3. Click **Continue**. The Installer advances to the Destination Selection step. In this step, you are asked to choose the location (usually your Mac hard drive) where you want to install the NoteTaker software. When you select (click on) your preferred hard drive, the Installer confirms your selection:

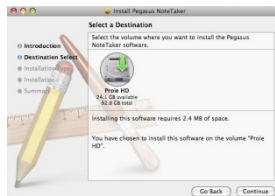


Figure 2 Installer showing the Destination Select stage

4. Click **Continue**. The Installer advances to the Installation Type stage. In this stage, you confirm that you want to perform a standard installation of the NoteTaker software on the hard drive you selected.

Notes:

Performing a standard installation will install the software directly into your Applications folder on your Mac's hard drive. If you want to change the location to which the software will be installed, clicking Change Install Location will return you to the previous step, Choose Destination Location.

5. Click **Install**. The **Password** dialog opens.
6. Enter your user password and click **OK**. The NoteTaker software is installed on the drive you selected and the **Install Succeeded** message is displayed on the Installer.
7. Click **Close** to close the Installer and complete the installation.

● Using the NoteTaker Preferences Tool

About the NoteTaker Preferences Tool

When you use your Digital Pen to write text, everything you write is saved as a series of TIFF (Tagged Image File Format) images in the Mobile NoteTaker memory. Before you can work with your text on your Mac, you first need to transfer the TIFF images from the Mobile NoteTaker to your Mac's hard drive. When you connect the Mobile NoteTaker to a USB port on your Mac, your text is automatically transferred directly from the Mobile NoteTaker to your Mac.

Before you can start transferring your text from the Mobile NoteTaker, you first need to set preferences on your Mac. By setting preferences, you decide:

- where on your Mac's hard drive you want to save the TIFF images;
- whether you want to erase the TIFF images from the Mobile NoteTaker after you have imported them to your Mac.

You set these preferences using the NoteTaker Preference Tool.

Setting Preferences with the NoteTaker Preference Tool

The following procedure describes how to set preferences using the NoteTaker Preference Tool:

1. Click on the NoteTaker Preferences icon. The NoteTaker Preferences dialog opens:

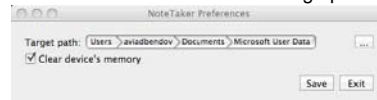


Figure 3: NoteTaker Preferences dialog

The NoteTaker Preferences dialog consists of the following elements:

- The **Target Path** – displays the path to the location on your Mac's hard drive where TIFF images from the Mobile NoteTaker will be saved.
 - The **Clear Device Memory** checkbox – if this checkbox is checked, the Mobile NoteTaker's memory will be cleared (erased) after you upload TIFF images to your Mac. If the checkbox is unchecked, the TIFF images will remain saved on the Mobile NoteTaker after you have uploaded them to your Mac.
2. The first preference you need to set is the location on your Mac where TIFF images will be saved when you transfer them from the Mobile NoteTaker. The Target Path displays the default location to which the TIFF images will be saved. To choose a different path, click the ellipsis button ("...") to open the Finder window:

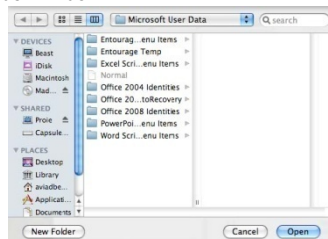


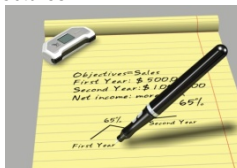
Figure 4 NoteTaker Preferences Finder window

3. Choose where on your Mac you want to save TIFF images by clicking on the relevant location in the left hand column, and then click Open. The Finder window closes and the new Target Path is displayed in the NoteTaker Preferences dialog.
4. If you want to clear the NoteTaker's memory each time you upload TIFF images from it, check the Clear Device Memory checkbox. To leave the TIFF images on the Mobile NoteTaker after they are uploaded, leave the checkbox unchecked.
5. To save your preferences and close the NoteTaker Preferences dialog, click Save. When you next connect the Mobile NoteTaker to your Mac, your images will be uploaded according to the preferences you have set.
6. To close the NoteTaker Preferences dialog without saving any changes, click Exit.

Mobile NoteTaker operation with Mac

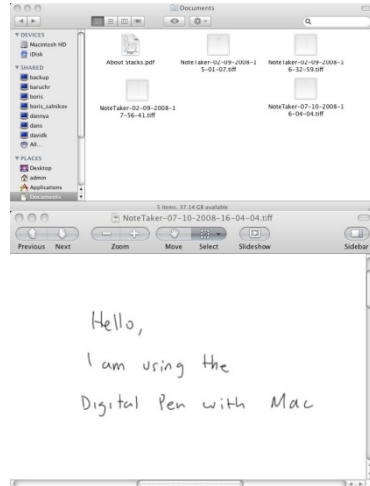
STEP1

Use the Mobile NoteTaker to capture and save your notes while you are away from your Mac, in meetings or lectures.



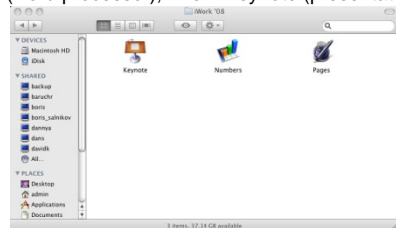
Connect the Mobile NoteTaker to your Mac, to upload the saved notes. The notes are saved in TIFF format. Double click on the desired TIFF file, in order to view the note.

STEP2



STEP3

While being connected to the Mac via the USB port, the Mobile NoteTaker can be used as a Mouse and as a Tablet input device for Mac ink applications. Use the digital pen in applications such as iWork'08. You can write handwritten text, on-line, and the Mac will convert it into text. The feature is available iWork Pages (word processor), iWork Keynote (presentations) and iWork Numbers (spreadsheets).



The Digital Pen can be also used for drawings inside applications such as Adobe Illustrator, Photoshop, etc.